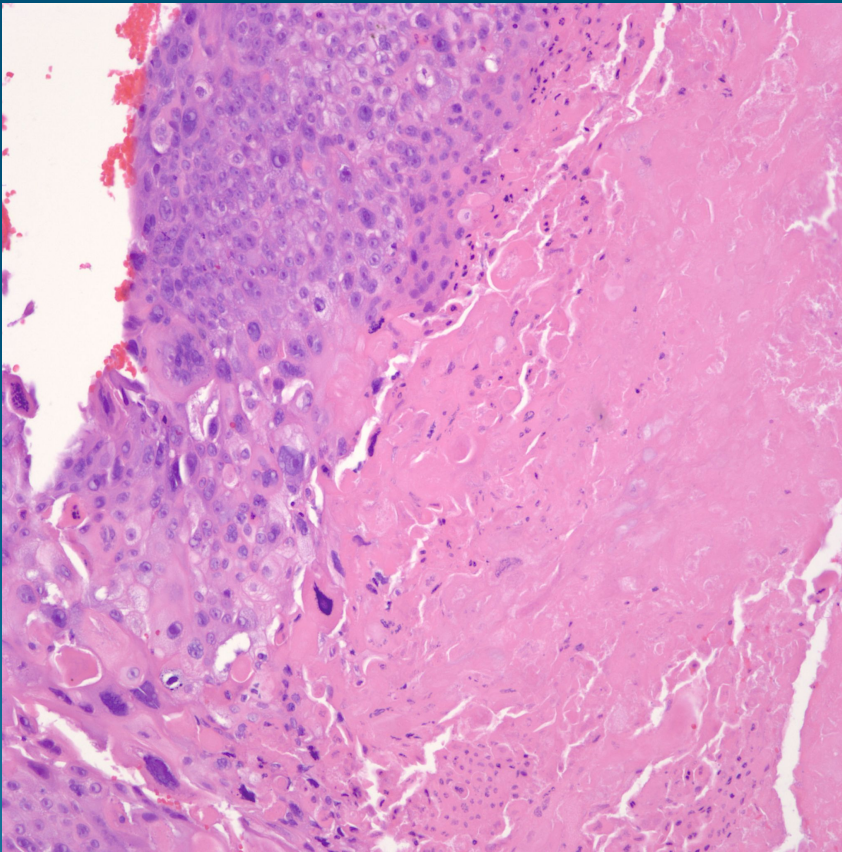


What is the best diagnosis?

- A. Sebaceous Carcinoma
- B. Squamous cell Carcinoma
- C. Pilomatrical carcinoma
- D. Basal Cell Carcinoma
- E. Hidradenocarcinoma

Pilomatrical Carcinoma

Pearls



- Cytologically malignant high grade nuclei of basaloid cells admixed with shadow cells
- Dermal or subQ based
- DDX: Basal cell carcinoma with matrical differentiation